

LOT 222

# COTTEE



2+  
MPR



2



RV+2



## The Cottie




### Areas (estimated metric m<sup>2</sup>)

|                      |     |
|----------------------|-----|
| Garage (RV/car/boat) | 93  |
| Living               | 120 |
| Alfresco             | 31  |

### Indicative floor plan (on reverse)

MPR = Multi Purpose Room

This intelligently designed two-bedroom home with a multi-purpose room, makes the most of space completed with an amazing expansive 7.6 x 4.1m rear private alfresco. The Cottie features a sleek kitchen with European appliances, stone benchtops and handy refrigerator water access point. The two, full bathrooms feature stone benchtops and frameless, walk-in showers including ensuite with double vanity plus separate entrance to walk-in robe and ensuite. Smart design means four zones of ducted air conditioning to save energy and the flexibility to enjoy nature's gentle breezes with the elegant ceiling fans in each room. Not to mention the 15x6m garage for your RV, hobby or storage and secure side gate with Colourbond fencing.

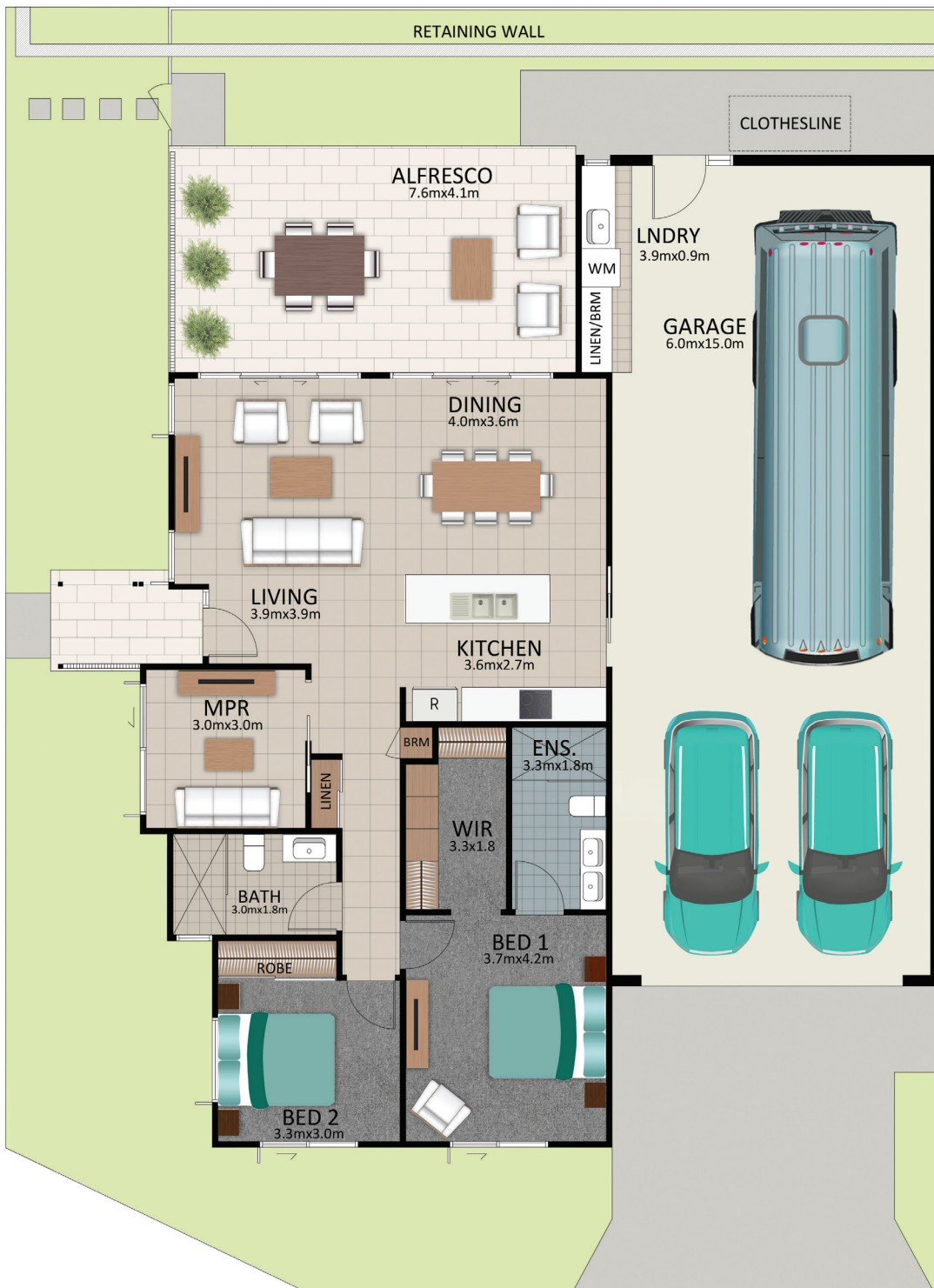
PHONE 1800 025 025  
EMAIL [info@visitlatitude25.com.au](mailto:info@visitlatitude25.com.au)  
ADDRESS 1 Latitude Boulevard, Nikenbah QLD 4655  
FOLLOW US   

[visitlatitude25.com.au](http://visitlatitude25.com.au)

*Latitude 25*  
RV Lifestyle Community

# COTTEE

## FLOORPLAN



*This is an indicative floor plan that may vary depending on which lot is selected. Site, lot conditions, supplier variations and council requirements may result in alterations to the house design as depicted. Minor variations in window size and shape could change for privacy and lighting reasons, screens may be added or removed to suit orientation, gate houses may be added or deleted to improve streetscape. Internal dimensions are indicative only and do not necessarily reflect overall GFA. February 2021.*

PHONE 1800 025 025  
 EMAIL [info@visitlatitude25.com.au](mailto:info@visitlatitude25.com.au)  
 ADDRESS 1 Latitude Boulevard, Nikenbah QLD 4655  
 FOLLOW US [f](#) [i](#) [v](#)

[visitlatitude25.com.au](http://visitlatitude25.com.au)

*Latitude 25*  
 RV Lifestyle Community