

LOT 44

# WALTON



2+  
MPR



2



RV+2



## The Walton




### Areas (estimated metric m<sup>2</sup>)

Garage (RV/car/boat)	102
Living	121
Alfresco	19

### Indicative floor plan (on reverse)

MPR = Multi Purpose Room

The Walton is streamlined luxury with an efficient two bedroom plus multipurpose room for your study, hobby or visitors plus two full bathrooms with stone benchtops and frameless walk-in showers. The quality kitchen featuring stone benchtops, European appliances and handy refrigerator water access point flows seamlessly to a spacious side alfresco area (6.5 x 3.2m) plus a secure side gate and Colourbond Fencing provide peace of mind. Energy efficiency is key in the Walton with four zones for the ducted air conditioning and beautiful ceiling fans throughout, to sustain the gentle fresh breezes of Latitude25 living.

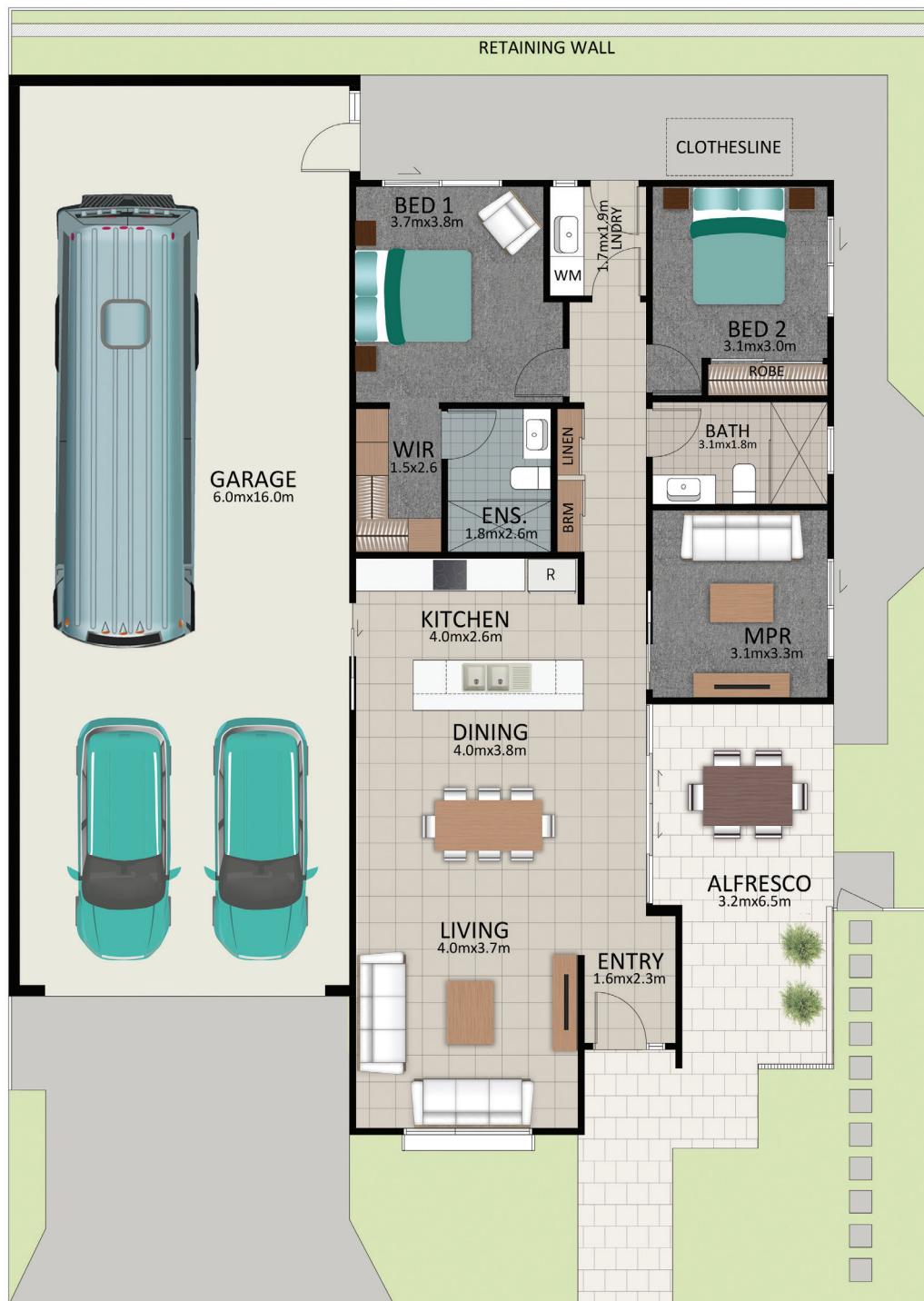
PHONE 1800 025 025  
EMAIL [info@visitlatitude25.com.au](mailto:info@visitlatitude25.com.au)  
ADDRESS 1 Latitude Boulevard, Nikenbah QLD 4655  
FOLLOW US   

[visitlatitude25.com.au](http://visitlatitude25.com.au)

*Latitude25*  
RV Lifestyle Community

# WALTON

## FLOORPLAN



*This is an indicative floor plan that may vary depending on which lot is selected. Site, lot conditions, supplier variations and council requirements may result in alterations to the house design as depicted. Minor variations in window size and shape could change for privacy and lighting reasons, screens may be added or removed to suit orientation, gate houses may be added or deleted to improve streetscape. Internal dimensions are indicative only and do not necessarily reflect overall GFA. July 2021.*

PHONE 1800 025 025  
 EMAIL [info@visitlatitude25.com.au](mailto:info@visitlatitude25.com.au)  
 ADDRESS 1 Latitude Boulevard, Nikenbah QLD 4655  
 FOLLOW US [f](#) [i](#) [v](#)

[visitlatitude25.com.au](http://visitlatitude25.com.au)

*Latitude 25*  
 RV Lifestyle Community